

# Celebrating Harvey

A pop quiz  
about a life well-lived

September 27, 2024





1. The photo below is taken from...

- a. Harvey's Bar Mitzvah
- b. His first driver's license
- c. His high school senior yearbook
- d. His college senior yearbook
- e. His company ID card



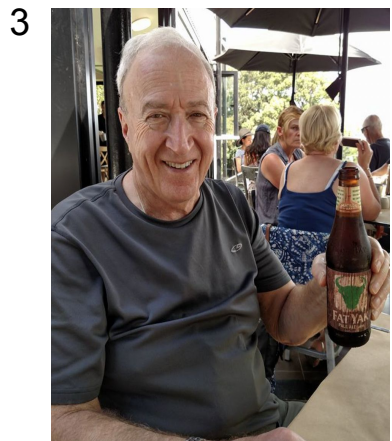
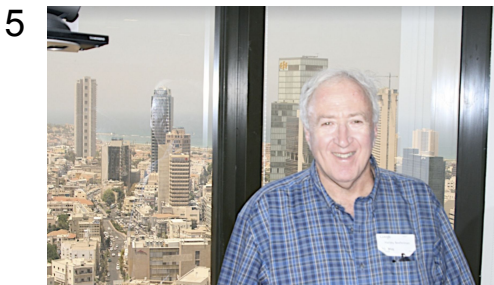
2. There's only one country on this list that Harvey and Eileen did *not* visit together.  
Can you guess which one it is?

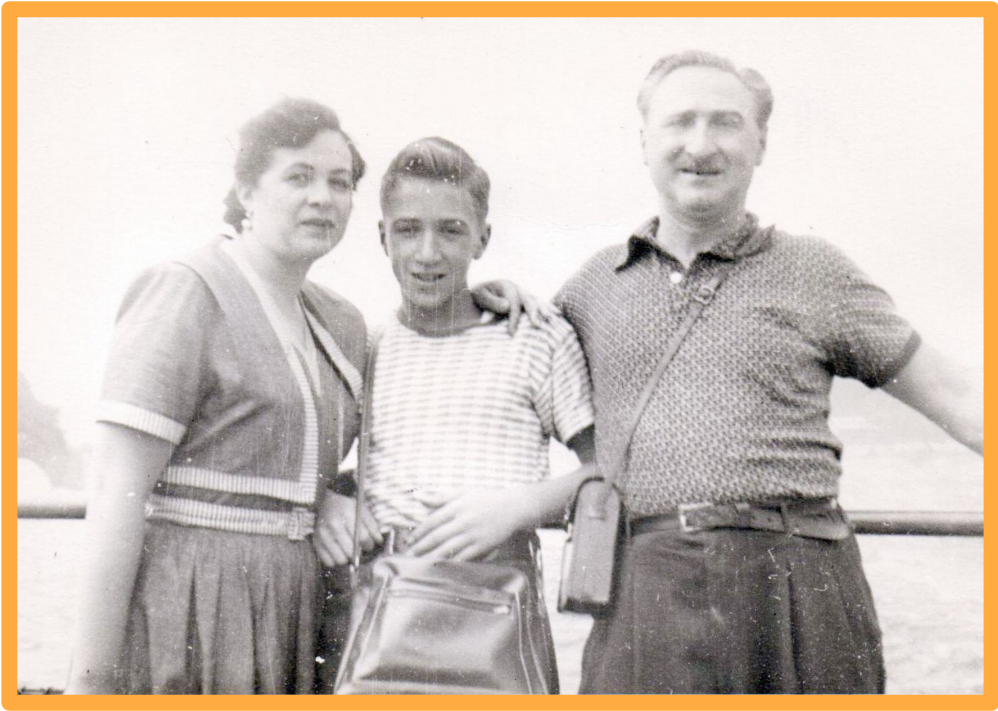
Argentina Australia Austria Belize  
Bosnia and Herzegovina  
Canada Costa Rica Croatia Cuba  
Denmark England Estonia Finland  
France Germany Haiti Honduras  
Hungary Iceland Ireland Italy Jamaica Japan  
Latvia Mexico Montenegro Netherlands  
New Zealand Norway Poland Portugal  
Russia Slovenia Spain Switzerland



3. For each country listed below, which photo shows Harvey having fun in that country?

Australia  
Costa Rica  
Cuba  
Israel  
Spain





4. Harvey grew up in which New York City borough?



5. Which of these hit songs was released in the year he graduated high school?

- a. "Mack the Knife" (Bobby Darin)
- b. "Surfin' USA" (the Beach Boys)
- c. "It's my Party" (Lesley Gore)
- d. "Purple Haze" (Jimi Hendrix)
- e. "Heartbreak Hotel" (Elvis Presley)



6. Harvey's Mom, Mollie, was born in:
- a. Chicago, Illinois
  - b. Brooklyn, New York
  - c. Savannah, Georgia
  - d. Odessa, Ukraine
  - e. Toronto, Ontario



7. Which kid is little Harvey (c. 1952)?



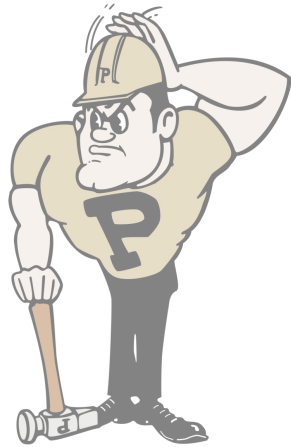


8. Which of these institutions did Harvey *not* get a degree from?  
Choose all that apply.

- a. Purdue University
- b. University of Illinois at Chicago
- c. Brooklyn Technical High School
- d. University of Chicago

9. Which of these sports did he *not* play competitively?

- a. Tennis
- b. Football
- c. Golf
- d. Soccer
- e. Crew
- f. Basketball



10. What fraternity did he belong to in college?

TKE    ΑΦΑ    ΤΕΦ    ΠΛΦ    ΔΔΔ



(1974)



(2015)

**11.** What is the correct spelling of the Canadian city where he and the family lived in the 70s and 80s?

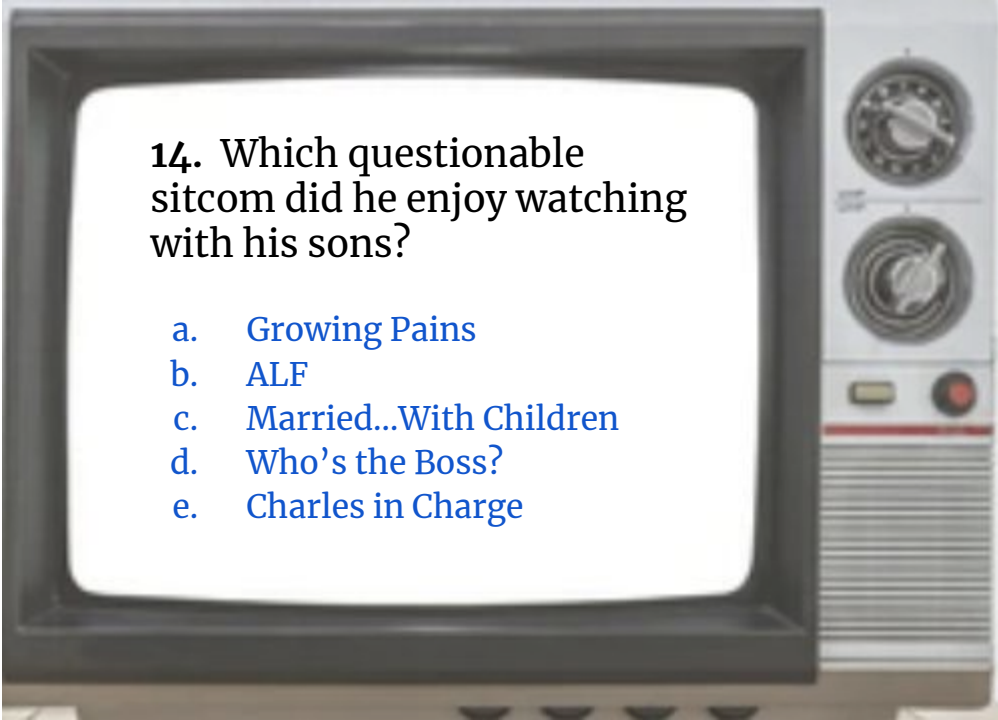
- a. Misissauga
- b. Missisauga
- c. Mississaugua
- d. Mississagua
- e. Mississauga

**12.** What is the name of the fast food chain we frequented there?

- a. Burger Barne
- b. Osco
- c. Canadian Chicken
- d. Harvey's
- e. Loblaws

**13.** In the early 1980s he sponsored his younger son's T-ball team, and the team took the name of the paint brand his company manufactured. What was the team called?

- a. The Weatherbeaters
- b. The Rust-Oleums
- c. The Benjamin-Moores
- d. The Kelly-Moores
- e. The Gliddens

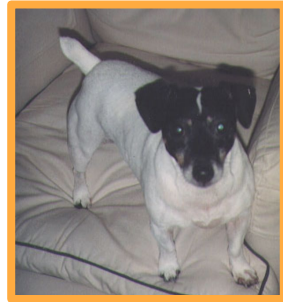


**14.** Which questionable sitcom did he enjoy watching with his sons?

- a. Growing Pains
- b. ALF
- c. Married...With Children
- d. Who's the Boss?
- e. Charles in Charge

15. Which of the names below was *not* the name of a beloved family pet, and which of the real ones was Harvey's favorite, shown here?

- a. Penny
- b. Nickel
- c. Dixie
- d. Quarter
- e. Sparky



16. We've been to ballparks all across the US and Canada! When he brought his elder son to see his first professional baseball game, who did they root for?

- a. Toronto Blue Jays
- b. Montreal Expos
- c. New York Yankees
- d. Chicago White Sox
- e. Chicago Cubs

17. In 1966, he published an article in *The Journal of Paint Technology* (Vol. 38, No. 492) that was cited well into the 21st century. What was the title of this article?

- a. *Practical applications of reinforced concrete in the paint industry*
- b. *Practical applications of rheology in the paint industry*
- c. *Practical applications of rhesus monkeys in the paint industry*
- d. *Practical applications of Rhea Perlman in the paint industry*
- e. *Practical applications of renal physiology in the paint industry*



Officers of the Chicago Society for Coatings Technology for 1975-76. Seated (left to right): Vice-President — Harvey L. Beeferman, of DeSoto, Inc.; President — Gus W. Leep, of Illinois Bronze Paint Co.; and Secretary — Rudolph C. Albrecht, of Standard T. Chemicals, Inc. Standing: Council Representative — Victor M. Willis, of Sherwin-Williams Co.; Immediate Past-President — Thomas E. Nevins, of U. S. Gypsum Co.; Membership Chairman — W. B. Bartelt, of Rust-Oleum Corp.; and Treasurer — Walter J. Krason, of Enterprise Paint Mfg. Co.



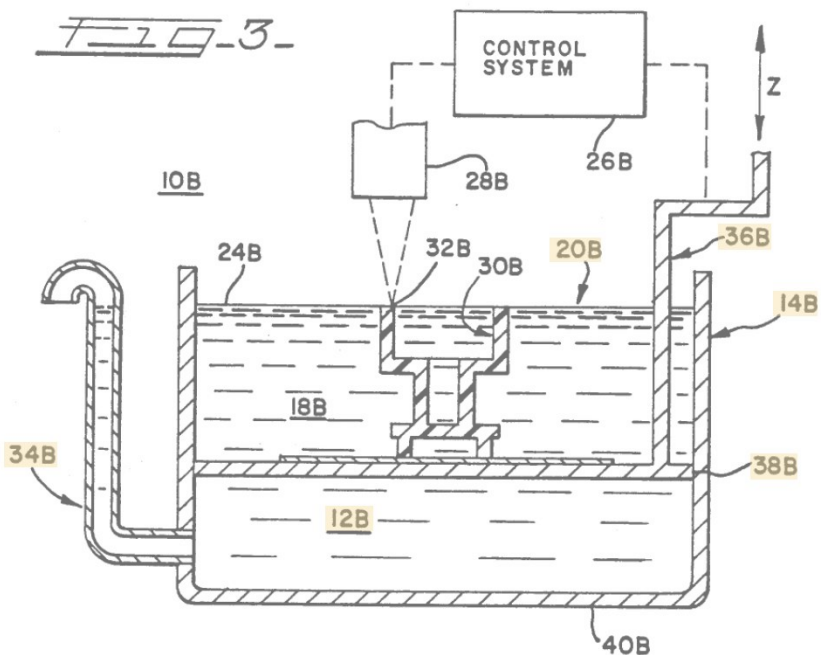
18. The research division Harvey led at DeSoto, Inc. made key contributions to paint and coatings research, but also to other fields, and DeSoto received hundreds of patents. One of them, filed in 1989 and entitled “*Stereolithographic method and apparatus in which a membrane separates phases*”, describes an early improvement to what technology, now widely used?

- a. Portable music players
- b. Spray paint
- c. Spray tan applicators
- d. 3D printing
- e. Capsule coffee makers

U.S. Patent

Sheet 2 of 2

5,011,635



19. Harvey's casino game of choice?

- a. Roulette
- b. Baccarat
- c. Poker
- d. Slots
- e. Craps

20. His sandwich of choice?

- a. Egg salad on sourdough
- b. Pastrami on rye
- c. Turkey on whole wheat
- d. Peanut butter, banana, and bacon
- e. Monte Cristo

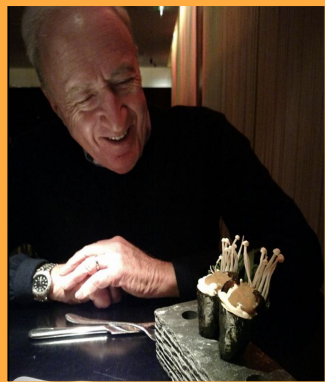
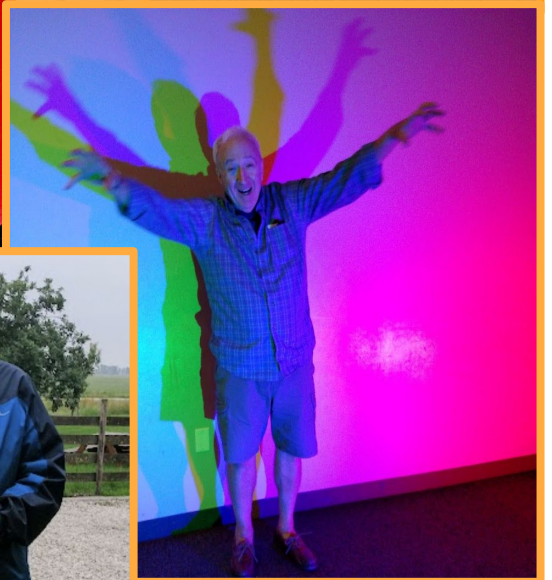


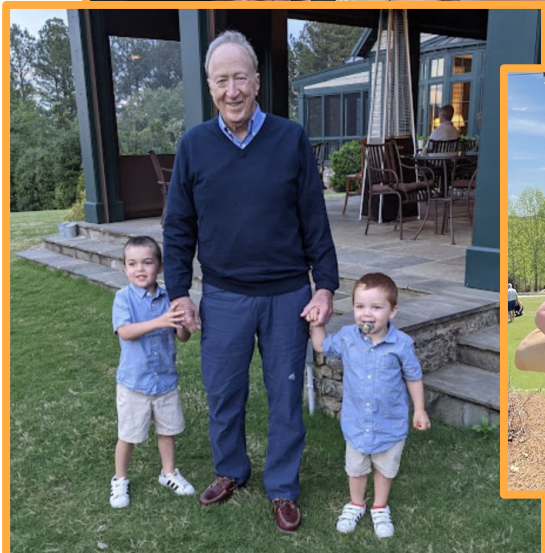
**21.** A hobby he had both as a youth and as an adult: collecting...

- a. Stamps
- b. Coins
- c. Fabergé eggs
- d. Beanie Babies
- e. Matchbooks

**22.** When he wasn't walking, bicycling, swimming, managing Datamuse, playing with grandkids, or traveling with Eileen, he was a beloved volunteer at...

- a. Bluffton Fire Department
- b. Hardeeville Community Library
- c. Hilton Head Island  
Computer Club
- d. Rotary Club of Savannah
- e. Beaufort Garden Club









# HARVEY'S



**Answer key:** (1) c; (2) Japan; (3) clockwise from top left: Cuba, Spain, Australia, Costa Rica, Israel; (4) Brooklyn; (5) a; (6) c; (7) middle kid; (8) b; (9) d; (10) TEΦ; (11) e; (12) d; (13) a; (14) c; (15) d; shown is Nickel (aka *Nikki*); (16) e; (17) b; (18) d; (19) e; (20) b; (21) b; (22) c.

